

Krautkramer UltraLOG 3

A further advancement in the tailored complete solution for spot weld testing

New paths.

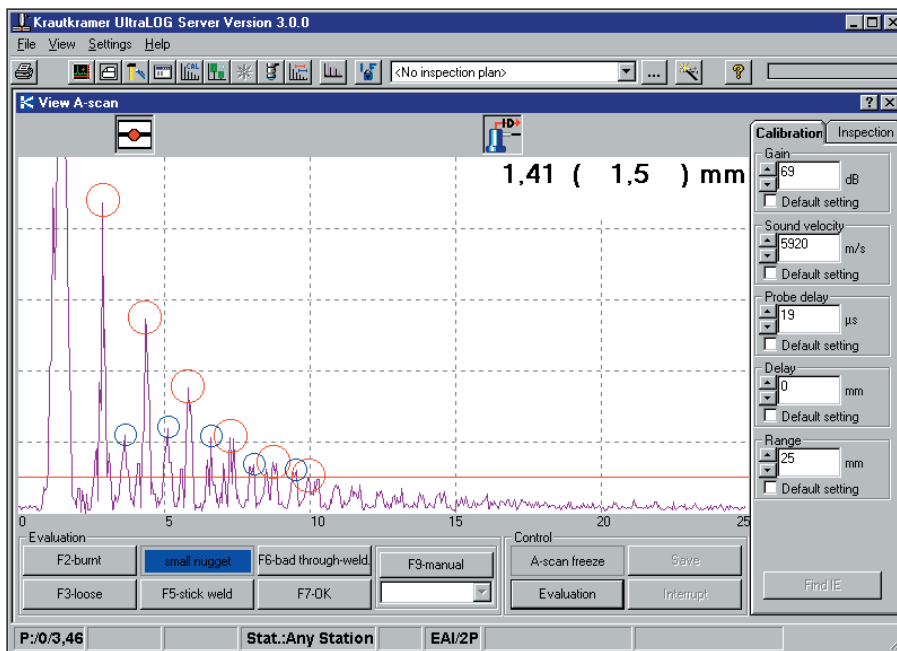
UltraLOG is a database program providing an application-oriented user interface and is used, in combination with the USLT 2000, for the systematic ultrasonic inspection of spot-welded joints. This system combines ultrasonic know-how with state-of-the-art technology – a complete solution for inspection, evaluation, documentation, and statistical process control. The system also allows you to integrate other test methods and results, such as visual or chisel tests. In this way, the program provides a complete documentation of all your test processes which can then easily be integrated into quality management systems.

Automatic transfer of values and evaluation assistance tools...

UltraLOG stores and manages test results and helps with the evaluation of echo displays. This includes detailed flaw classification: sound spot weld, loose or burnt spot weld, small nugget, bad through-welding/poor fusion, etc. To do this the program has three different evaluation assistance tools at its disposal which provide the best results according to the sheet combination and material surface, and which can be adapted to variable conditions: for quick introduction, for the experienced operator with configuration capability or an individual teach and learn method for the experts.

... and other practical functions.

The program was developed further in cooperation with users from the automobile industry:



Optimum testing reliability is achieved using stored reference ultrasonic images from a variety of sources which can be displayed and compared with a live A-scan. A major new feature is the Interface Echo Start function, which provides a stable A-scan display regardless of probe pressure.

Easy and intuitive operation were also focal points during the further development of UltraLOG. The program takes over any routine settings, e.g. gate positioning for automatic freeze. Graphical marking of backwall echoes and flaw echoes are of special help when positioning evaluation gates and when carrying out visual evaluation of the A-scans due to the fact that the characteristic of an echo sequence becomes directly visible.

Continual future reliability is and will remain a hallmark of our technology. UltraLOG is incorporated into the PC-based ultrasonic platform USLT 2000 which offers flexibility for future applications.

Specifications

Operating system: Windows 98/NT/2000/XP
 2 Versions: UltraLOG 2 / UltraLOG 3 with extended functions
 Minimum requirements for UltraLOG 3:
 Ultrasonic PC USLT 2000 with 500 MHz,
 64 MB RAM; 52 MB free disk space

